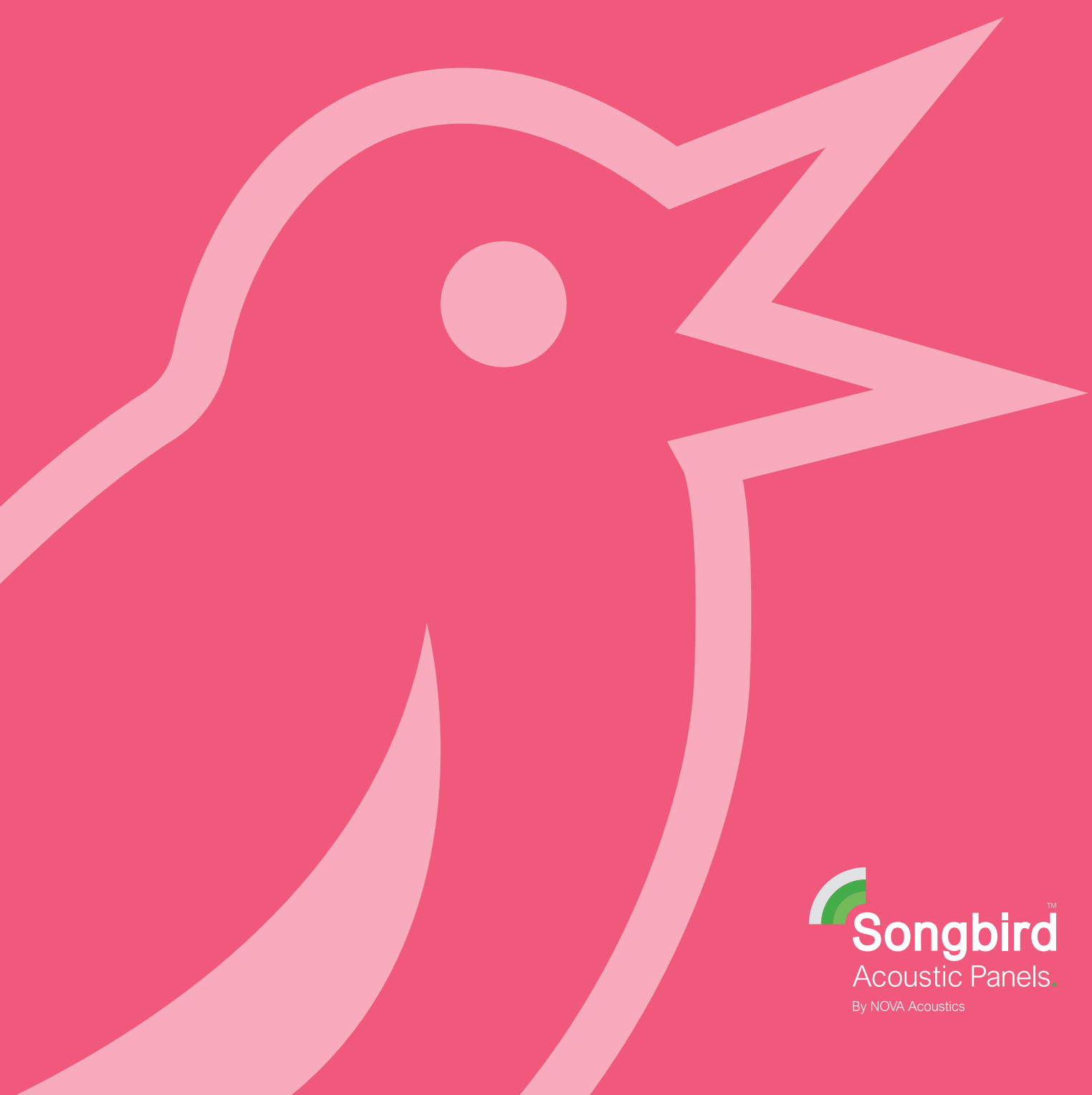




Warbler.™

Acoustic Panels

Technical Datasheet



Songbird™
Acoustic Panels.

By NOVA Acoustics

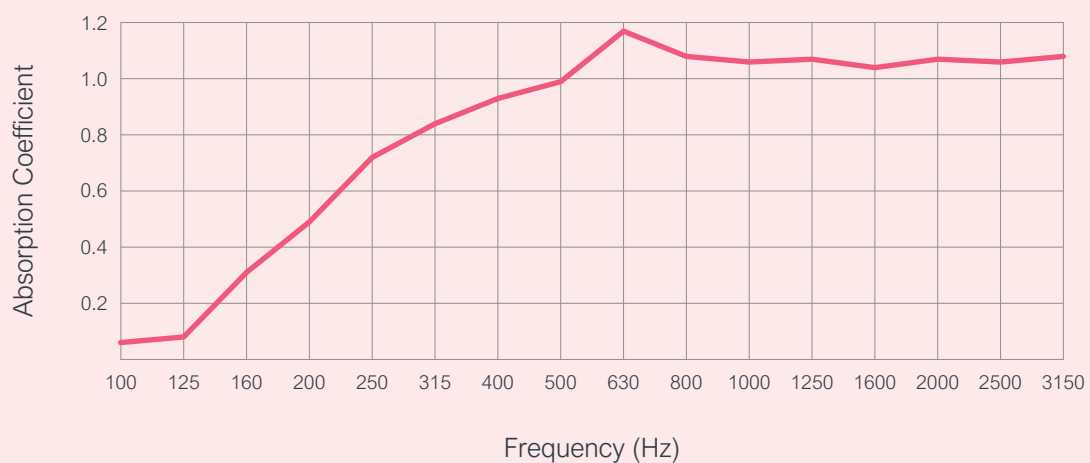
Acoustic Performance

Warbler™ Acoustic Panels are impact-resistant acoustic wall panels engineered to deliver superior sound absorption in high-traffic and sports environments. Constructed from a rigid, durable recycled fibreglass core with a high-performance fabric finish, they are designed to withstand physical impact while effectively reducing echo and reverberation. Ideal for sports halls, schools, leisure centres, and other public spaces, Warbler™ Impact panels provide a robust acoustic solution where both durability and noise control are essential.

The Laboratory Measurement of Random Incidence Sound Absorption to BS EN ISO 354:2003

40mm Direct Fixed	
Hz	Absorption Coefficient
100	0.16
125	0.18
160	0.31
200	0.49
250	0.72
315	0.84
400	0.93
500	0.98
630	1.17
800	1.08
1000	1.06
1250	1.07
1600	1.04
2000	1.07
2500	1.06
3150	1.08
Class Absorption: A	NRC 0.95

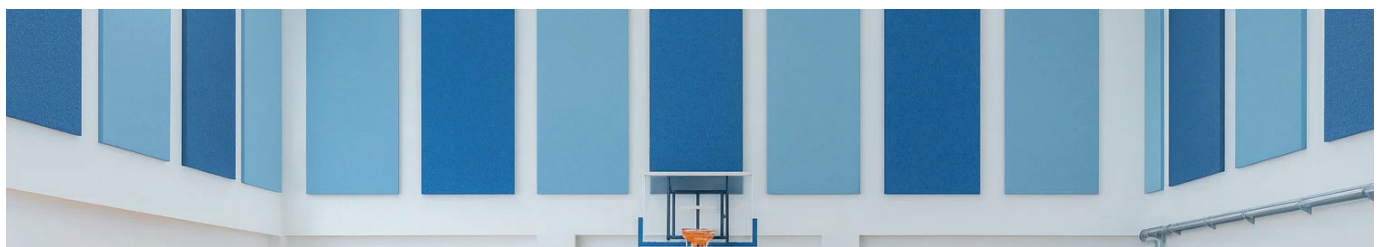
Sound Absorption Coefficient



Technical Performance

The Warbler™ Acoustic Panel is a durable, fabric-faced sound absorption panel designed for environments requiring high impact resistance and effective acoustic control. Ideal for sports halls, gymnasiums, schools, and multi-purpose public spaces, it combines strong reverberation control with a solid core and reinforced surface for long-term durability. Suitable for wall and ceiling installations, Warbler™ improves acoustic comfort by reducing echo in high-activity areas. The following section outlines key technical data, including acoustic performance, fire ratings, impact resistance, and other essential specifications for design and specification.

Cleaning	Light dirt marks may be removed by using a moist cloth. A small area should be tested before doing the rest of the area to ensure that the surface is not adversely affected.
Weight	40mm thickness panels weigh 4.8kg/m ²
Fire	Core board has been tested and offers EN 13501-1:2018 A2-s1, d0 and Class O fire rating to BS476: Part 6. Fabric facing complies with: Era: EN 13501-1, Class B, s1, d0 Cara/Lucia: Class 1 to BS476: Part 7 and EN1350-1 Class B, s1, d0 Sonus: EN1350-1 Class B, s1, d0 Class 0 fabrics can be supplied on request
Thickness	40mm
Density	95kg/m ³
Cutting Tolerance	+/- 3 mm max
Thickness Tolerances	+/- 4mm
Impact Resistant	Tested to DIN 18032-3: 1997-04 Sports halls, gymnastic halls, games and multi-purpose use-Part 3: tested for safety against ball throwing.
Substrate	The substrate must be even, smooth, clean, and dry. It must also be free from elements that could damage the boards. The surface receiving the panel should be clean, free of oil, dust and grease. Always perform a test with the glue to ensure compatibility and adhesion while strictly following the bonding instructions provided by the manufacturer.



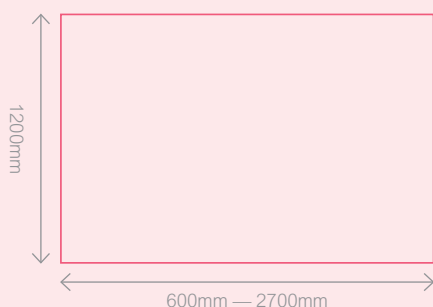
Shapes

Warbler™ Acoustic Panels are offered in two different shapes; squares and rectangles. They can be installed individually or arranged in creative groupings to achieve a distinctive design on walls and ceilings.

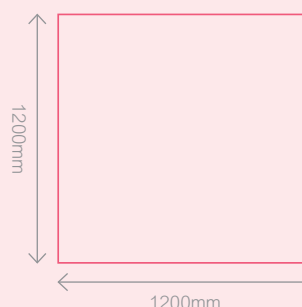
Rectangle sizes
1200 X 600 x 40
1200 X 900 x 40
1200 X 1200 x 40
1200 X 1500 x 40
1200 X 1800 x 40
1200 X 2100 x 40
1200 X 2400 x 40
1200 X 2700 x 40

Other shapes and sizes available upon request.

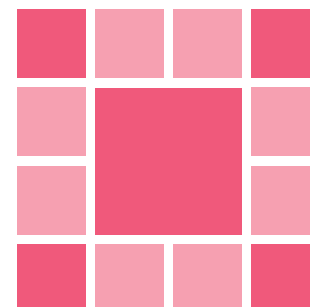
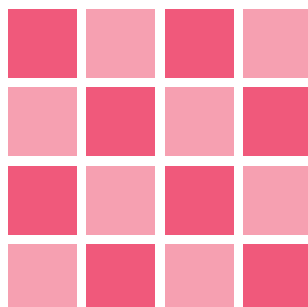
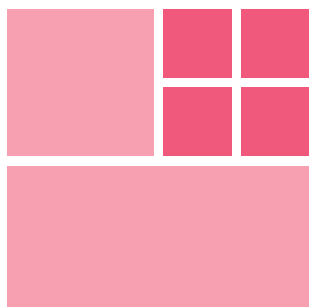
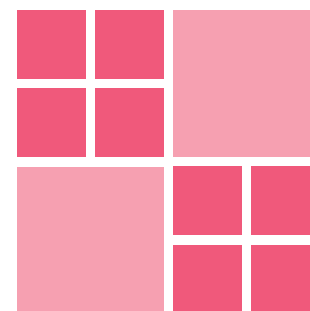
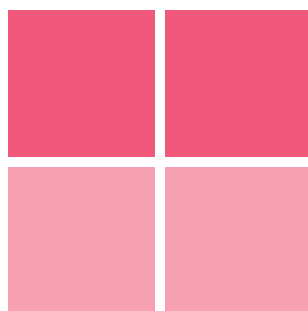
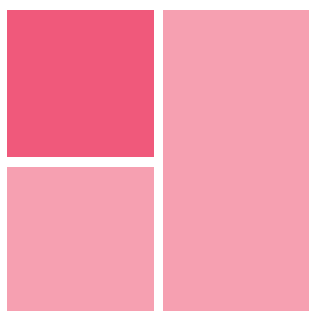
Rectangle



Square



Grouping Ideas



Colours

Warbler™ Acoustic Panels are available in a wide range of fabric colours, enabling designers to coordinate seamlessly with existing palettes or introduce contrasting tones that enhance the visual identity of a space while maintaining excellent acoustic performance.

Cara



Adriatic
EJ154



Austen
EJ173



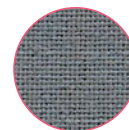
Beltane
EJ193



Black
EJ138



Carron
EJ015



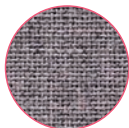
Chaucer
EJ172



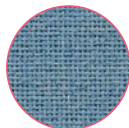
Clan
EJ169



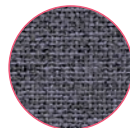
Cluanie
EJ180



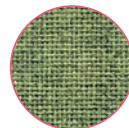
Denny
EJ196



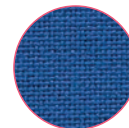
Dolphin
EJ105



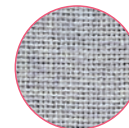
Easdale
EJ188



Fair Isle
EJ186



Galilee
EJ125



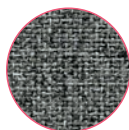
Glass
EJ004



Hillswick
EJ190



Inverness
EJ175



Lead
EJ104



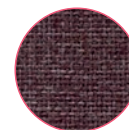
Lerwick
EJ194



Lomond
EJ192



Lora
EJ187



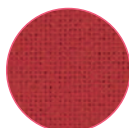
Lossie
EJ197



Maree
EJ195



Merrick
EJ048



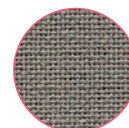
Pitlochry
EJ076



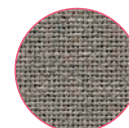
Portland
EJ016



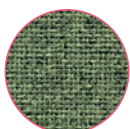
Ronay
EJ189



Shetland
EJ191



Spray
EJ033



Staffa
EJ185



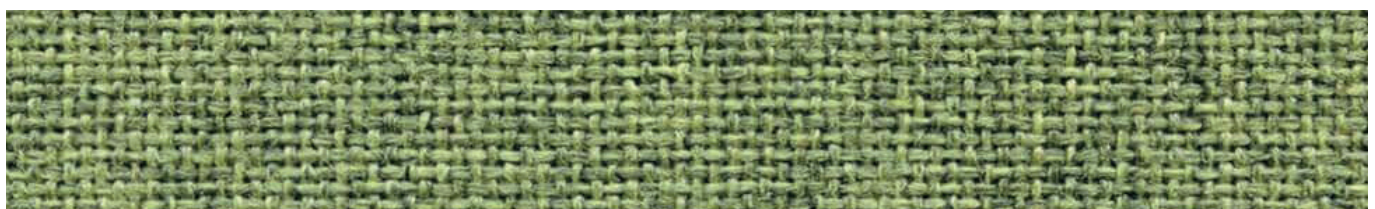
Tummel
EJ038



Vit
EJ184



Walten
EJ011



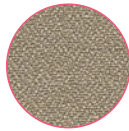
Lucia



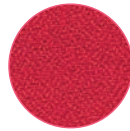
Adobo
YB165



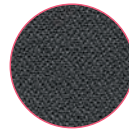
Apple
YB096



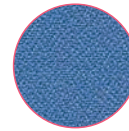
Aruba
YB093



Belize
YB105



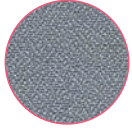
Blizzard
YB108



Bluebell
YB097



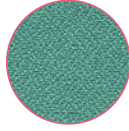
Bridgetown
YB102



Buru
YB170



Calypso
YB106



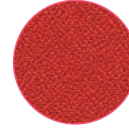
Campeche
YB301



Costa
YB026



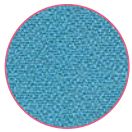
Havana
YB009



Lobster
YB087



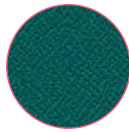
Madura
YB156



Marianna
YB157



Martinique
YB004



Montserrat
YB011



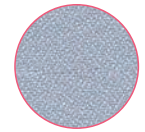
Ocean
YB100



Oyster
YB107



Paseo
YB019



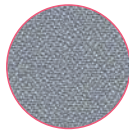
Rum
YB086



Sandstorm
YB302



Scuba
YB089



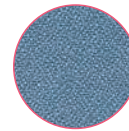
Slip
YB094



Solano
YB088



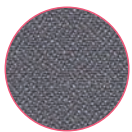
Sombrero
YB046



Steel
YB095



Tarot
YB090



Tequila
YB038



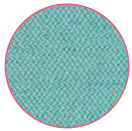
Tortuga
YB168



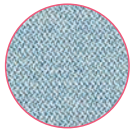
Windjammer
YB047



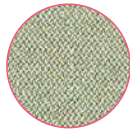
Era



Aeon
CSE20



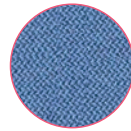
Allowance
CSE38



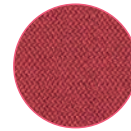
Analogue
CSE33



Calendar
CSE19



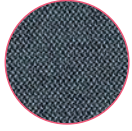
Chapter
CSE08



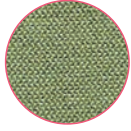
Cycle
CSE06



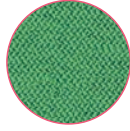
Date
CSE24



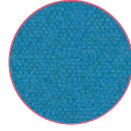
Elapse
CSE44



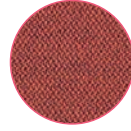
Endurance
CSE34



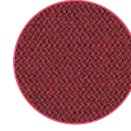
Event
CSE18



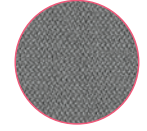
Everlasting
CSE10



Experience
CSE29



Extent
CSE28



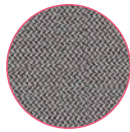
Forecast
CSE11



Forward
CSE14



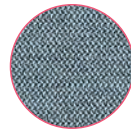
Futurist
CSE01



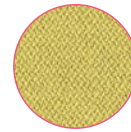
Generation
CSE02



History
CSE21



Late
CSE43



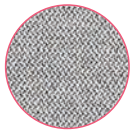
Lifetime
CSE03



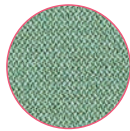
Maturity
CSE40



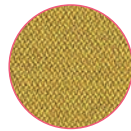
Measure
CSE27



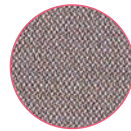
Memo
CSE46



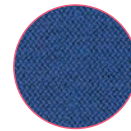
Notation
CSE36



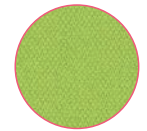
Occasion
CSE32



Occurrence
CSE23



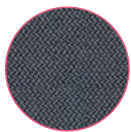
Perennial
CSE12



Period
CSE07



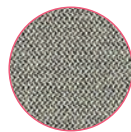
Phase
CSE17



Present
CSE13



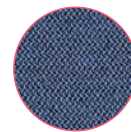
Prime
CSE09



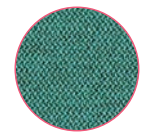
Prompt
CSE45



Quota
CSE41



Range
CSE42



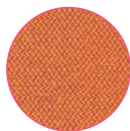
Rest
CSE37



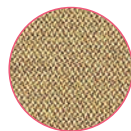
Sequence
CSE25



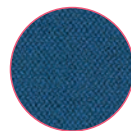
Signature
CSE35



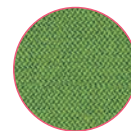
Span
CSE05



Splitsecond
CSE31



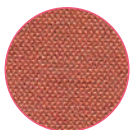
Stage
CSE15



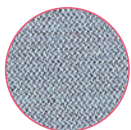
Timelapse
CSE16



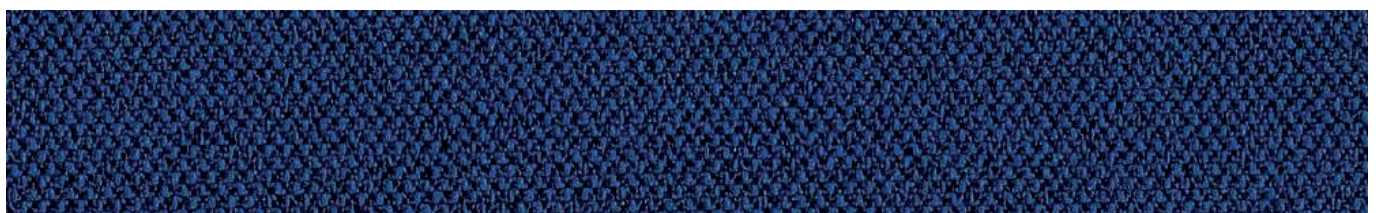
Transition
CSE30



Turn
CSE26

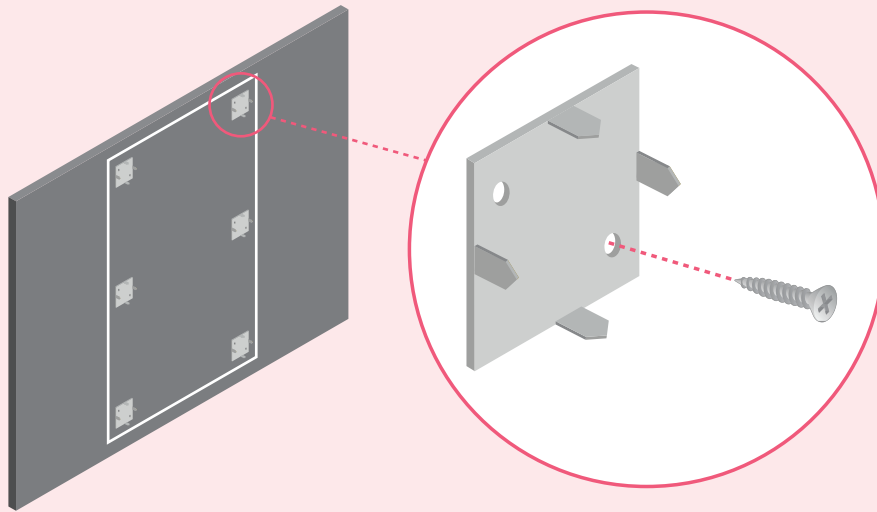


Youth
CSE39

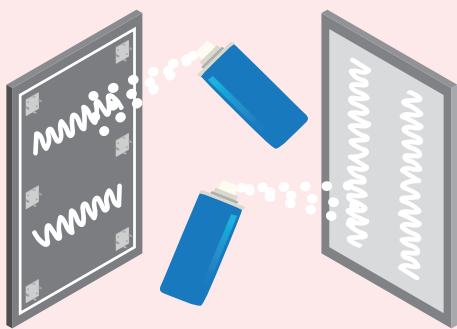


Installation Guide

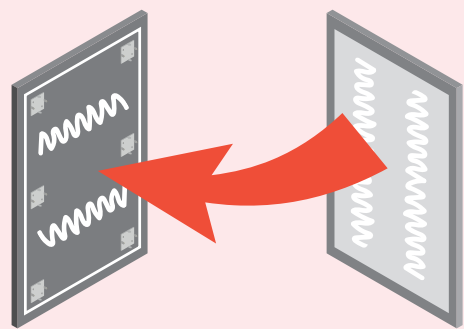
Ensure all wall surfaces to which the panel will be applied to are clean and dry. Panels can be fixed to most surfaces including concrete, plasterboard and block work providing they are solid. Wallpaper should be removed. Gloss paint roughened. Emulsion paint brushed with a stiff brush.



Step 1: Lightly trace the panel edges onto the desired installation area. Then suitably and securely fix the appropriate number of clips using screws.



Step 2: Spray contact adhesive vertically onto the panels reverse surface and horizontally onto the desired installation area. Be sure to spray over the clips with contact adhesive, ensuring that 100% of both the panel and wall surface are covered.



Step 3: After waiting for the adhesive to dry (2-5 minutes at 23°C) carefully align the panel to the marked area and push gently - allowing the clip spikes to bite into the panel. Once confident with the panel positioning, press firmly over the entirety of the surface.



Key Terms & Conditions

Liability and Product Suitability: Songbird Acoustic accepts no liability for loss, damage, or performance issues arising from circumstances beyond its control, including site conditions, handling, storage, installation, or end use. Product suitability must be independently verified by the specifier, installer, or end user prior to installation.

Inspection and Acceptance: All panels must be inspected upon delivery and before installation for colour variation, defects, or damage. Installation constitutes acceptance that the panels were supplied in satisfactory condition. Any issues reported after installation has commenced will not be covered under warranty.

Installation Responsibility: Panels must be installed strictly in accordance with the manufacturer's published guidelines. The installer is solely responsible for ensuring correct installation; failure to comply may void the warranty.

Colour, Weight, and Materials: Colour samples are representative only and may vary in shade or texture; physical samples are available upon request. All stated weights are approximate.

Adhesive and Moisture: Where specified, adhesive must be applied to 100% of both bonding surfaces, e.g. panel and wall. Panels must be protected from excessive moisture during storage, handling, and installation.

Full terms & conditions can be found here: <https://www.novaacoustics.co.uk/terms-conditions/>

