



Note[™]

Product Data

Performance Data

Maintenance and Cleaning Guide

Note™ Product Data

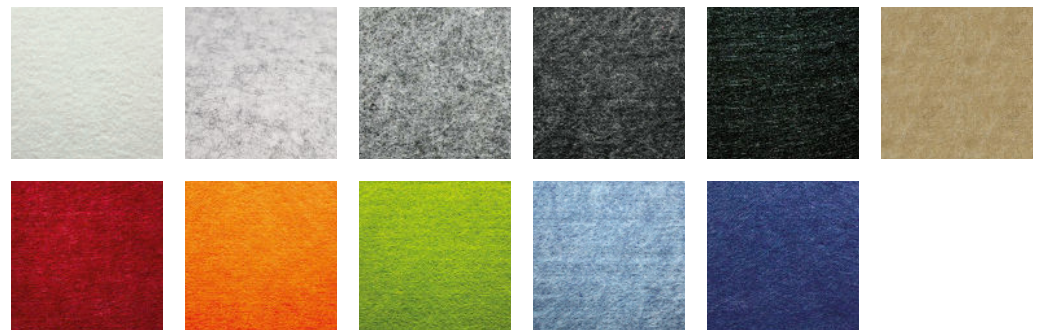
Description: Note™ is a high performing acoustic fibreboard with absorptive qualities. Its lightweight and semi-rigid characteristics allow it to be used to create a wide range of acoustic solutions, where design and aesthetics are vital. It is available in a wide range of colours and has a solid colour throughout, Note also contains a minimum of 65% recycled Polyester materials.

Dimensions: Available in 12mm and 24mm
1220mm x 2440mm

Mass: 12mm - 2.4 kg m²
24mm - 4.8 kg m²

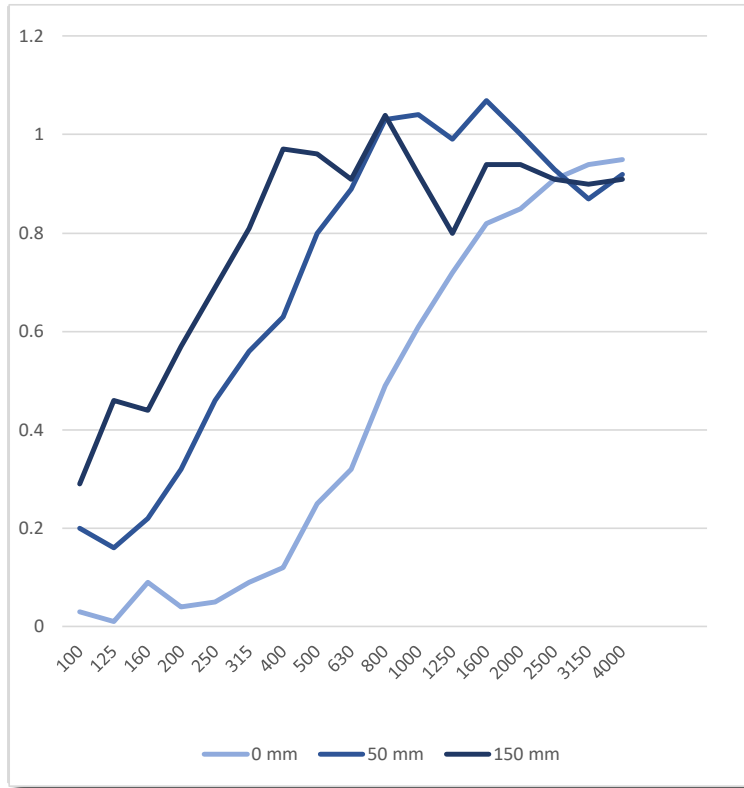
Fire Rating: EN 13501-1:2007+A1:2009.
B - s1, d0

Features and Benefits: Available in a wide range of colours
Incredible potential for bespoke designs
Can create strong stable structures
Lightweight
Highly durable
Composition: 100% Polyester
Minimum of 65% recycled content
Can be digitally printed on

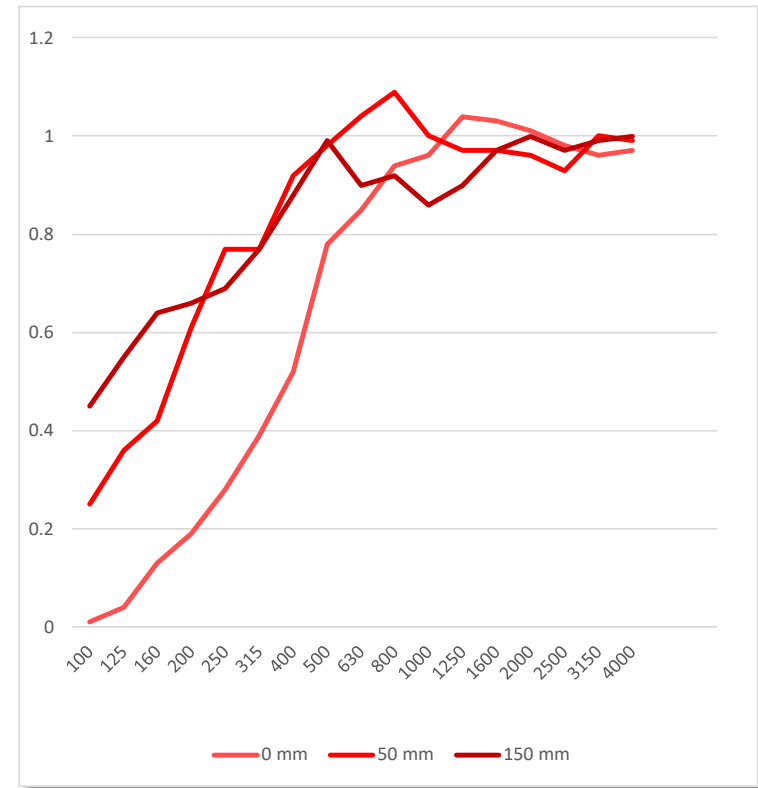


Note™ Performance Data

Acoustic Test Report
Note 12 mm



Acoustic Test Report
Note 24 mm



Freq	100	125	160	200	250	315	400	500	630	800	1000	1250	1600	2000	2500	3150	4000	NRC
0 mm	0.03	0.01	0.09	0.04	0.05	0.09	0.12	0.25	0.32	0.49	0.61	0.72	0.82	0.85	0.91	0.94	0.95	0.45
50 mm	0.2	0.16	0.22	0.32	0.46	0.56	0.63	0.8	0.89	1.03	1.04	0.99	1.07	1.00	0.93	0.87	0.92	0.8
150 mm	0.29	0.46	0.44	0.57	0.69	0.81	0.97	0.96	0.91	1.04	0.92	0.8	0.94	0.94	0.91	0.9	0.91	0.85
0 mm	0.01	0.04	0.13	0.19	0.28	0.39	0.52	0.78	0.85	0.94	0.96	1.04	1.03	1.01	0.98	0.96	0.97	0.75
50 mm	0.25	0.36	0.42	0.61	0.77	0.77	0.92	0.98	1.04	1.09	1.00	0.97	0.97	0.96	0.93	1.00	0.99	0.9
150 mm	0.45	0.55	0.64	0.66	0.69	0.77	0.88	0.99	0.90	0.92	0.86	0.9	0.97	1.00	0.97	0.99	1.00	0.9

Note™ Maintenance and Cleaning Guide

Stain	Treatment
Blood	A C
Burn	K
Chewing Gum	B C D I
Chocolate	B C D
Crayon/Colours	B C D
Drinks	A C
Dust/Dirt	Vacuum J or C
Excrement	B C
Grass	C
Ink (ballpoint)	D E
Ink (fountain)	A C
Lipstick	B C D E
Mildew	C
Milk	A E
Mud	B C
Nail Polish	A G
Oils and Grease	B C D
Paint (water based)	A C F
Paint (oil based)	A C D H
Sauces	B C D
Shoe Polish	B C D
Urine	A C
Vomit	A C D
Wine	A add salt C

Due to the high durability of our Note™ products they require minimal maintenance to maintain their aesthetic. To prevent dust build up, lightly vacuum on a regular basis. Most marks can be cleaned using a mild detergent solution followed by rinsing and blotting. Stains should be treated according to the charts below.

Prior to proceeding with the proposed cleaning method, apply to a concealed section of the material to ensure it will not affect the final finish. Spot clean only and avoid severe abrasion. Use a vacuum to restore pile, but *do not* use a hard brush.

Please Note: We do not recommend using solvent-based solutions on Note™ products.

Key	
A	Remove excess with Sponge or Cloth.
B	Remove excess with a knife edge or appropriate apparatus.
C	Using a solution of carpet shampoo, sponge in a circular motion working from the outside in (to avoid spreading the stain). Next sponge with clean warm water, mopping the excess moisture with a clean dry cloth. Once dry brush gently with a soft brush. If any stain remains, sponge with a solution of one part household bleach to six parts water, rinsing thoroughly after.
D	Using household dry cleaning fluid (use sparingly to avoid any adverse effects) lightly sponge and blot dry.
E	Using methalated spirits sponge and blot dry.
F	Lubricate the stain using petroleum jelly or glycerine.
G	Apply nail polish remover (ensure it does not include lanolin or is of a greasy nature).
H	Sponge with turpentine (or substitute).
I	Using ice cubes freeze the stain and scrape away excess while cold.
J	Clean using a extractive carpet cleaner.
K	Remove damaged portion with a circular cutter and then re-glue new piece into place.