

# BP012

## DATASHEET

D\_BP012\_v0010\_20140910\_EN

### Omni-directional loudspeaker for acoustic measurements

#### PRESENTATION

The *BP012* has 12 loudspeakers mounted on a dodecahedral housing. This ensures a **complete omni-directional radiation diagram**; that is to say, sound is radiated in a spherical distribution (see Fig. 2). ; that is to say, sound is radiated in a spherical distribution, as it is demanded in the ISO 16283-1, ISO 140, ISO 10140, ISO 3382-1 and ISO 3382-2 standards.

The *BP012* handles an electrical power of 600 W RMS developing **123 dB of sound power level** in the third octave bands with centre frequency between 50 and 5000 Hz. ( see Fig.1).

The loudspeaker has been designed to supply the maximum power during an hour.

The *BP012* is internally reinforced with an aluminium core that brings robustness and allows adapting it to the *TR014* tripod.

The *BP012* is supplied with a *CN012* connection cable to the amplifier and a carrying case (flightcase) *FL012*.

#### APPLICATIONS

- Measurement of sound insulation in buildings ISO 10140-2, ISO 140-4, ISO 16283-1
- Measurement of the reverberation time of rooms ISO 3382-1/-2
- Measurement of sound absorption in a reverberation room ISO 354

#### MAIN CHARACTERISTICS

- Lightweight : 14,5 kg
- 123 dB PWL (with *AP602*)
- Complete omni-directional radiation diagram



# BP012

## TECHNICAL SPECIFICATIONS



*Omnidirectional loudspeaker for acoustic measurements*

## TECHNICAL SPECIFICATIONS

### STANDARDS

ISO 10140-2  
 ISO 140-4  
 ISO 16283-1  
 ISO 3382-1/-2  
 ISO 354

### DIMENSIONS AND WEIGHT

**Diameter:** 400 mm  
**Weight:** 14.5 kg

### IMPEDANCE

**Nominal impedance :** 6  $\Omega$

### CONNECTOR

4 pins speakon® (+1, -1)

### POWER

**Maximum input power:** 600 W rms  
**Sound Power Level:** 123 dB PWL  
 (pink noise, 1/3 octave bands from 50 to 5000 Hz)  
**Power distribution by 1/3 octave bands:**

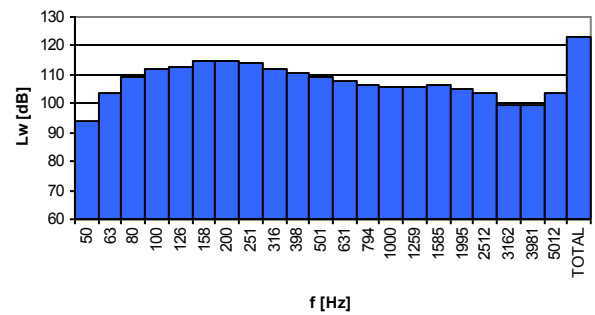


Fig.1 Frequency distribution of the BP012 sound power level

### DIRECTIVITY

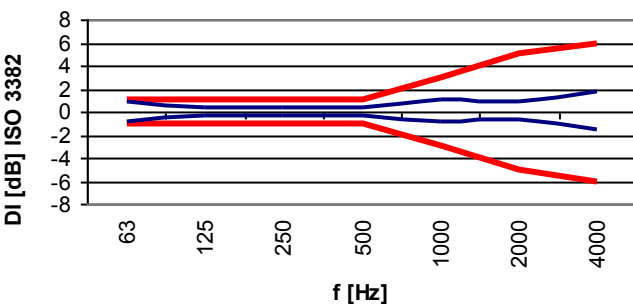
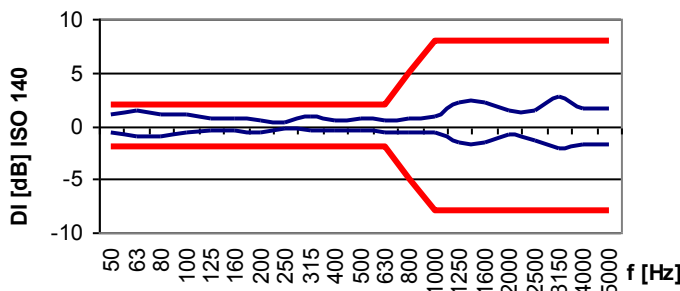


Fig. 3 Directivity (D) of BP012 in accordance with standards ISO 140 and ISO 3382

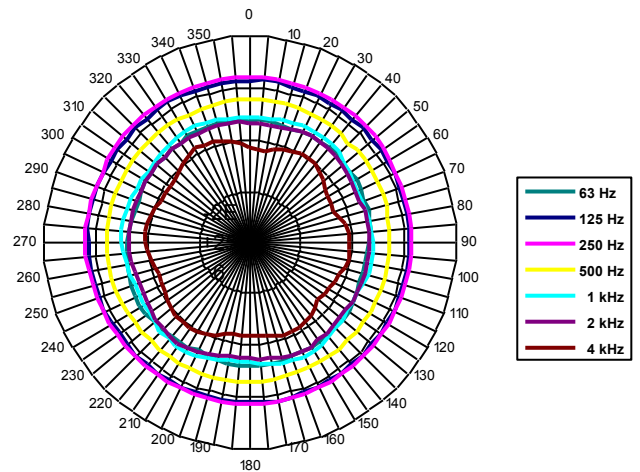


Fig. 2 Directivity diagrams for the octave bands centered in 125 Hz, 250 Hz, 500 Hz, 1 kHz, 2 kHz and 4 kHz

*The characteristics, technical specifications and Accessories may vary without prior notice*

# BP012

## ACCESSORIES



*Omni-directional loudspeaker for acoustic measurements*

## ACCESSORIES

### SUPPLIED ACCESSORIES

- FL012** Flightcase: Carrying case as a trolley to facilitate the BP012 mobility.
- CN012** Loudspeaker cable: 10 m cable with 4 pins speakon connectors (for different configurations please contact us)

### OPTIONAL ACCESSORIES

- TR014** Support for the BP012 with wheels: (height from 1,0 m to 2,5 m).



*The characteristics, technical specifications and Accessories may vary without prior notice.*